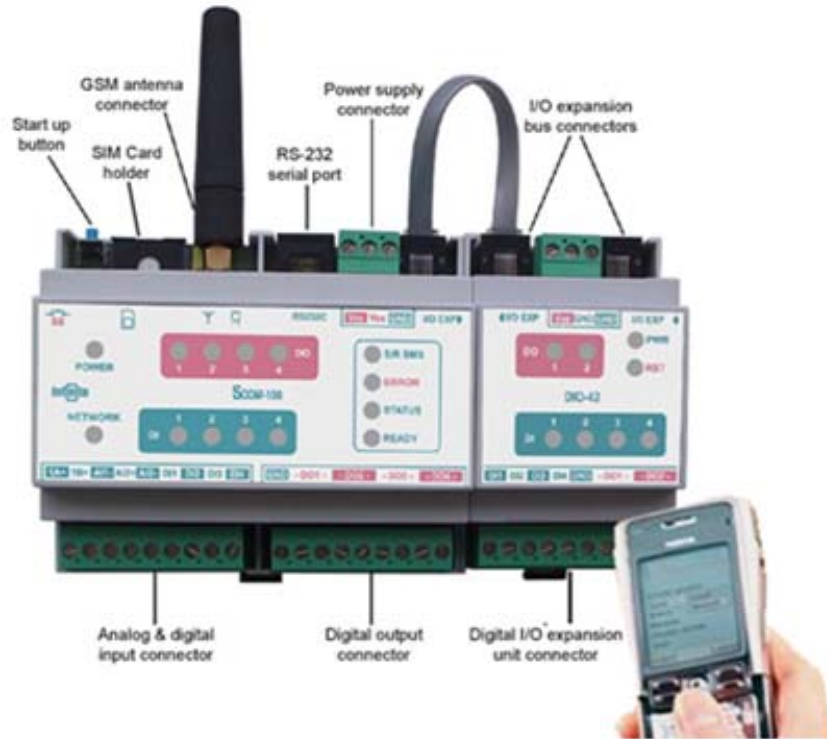


Get remote control into your hands!



**SCOM-100**

**Main unit**

Power supply: 12/24 VDC, 30mA to 0.25 A max (all DO on)  
 Wireless modem: Quad Band GSM (850/900/1800/1900MHz)  
 Digital inputs: 4, 12V, 0.2 Hz, expandable to 36 (8 GE-DIO-42 modules)  
 Analog inputs: 2, AI1: 0-10V, 0-1V, AD592 Temperature sensors, AI2: 0-20/4-20mA, expandable to 18 (4 GE-AI-4 modules)  
 Indications: LED, I/O & control states  
 Serial interface: RS232C, up to 921 kBit/s  
 Dimensions: 106 x 90 x 58 mm  
 Command set: Over 60 ASCII SMS commands for system configuration, alarm settings and remote control

Up to 8 DI/O and 4 AI/O extensions can be connected on a bus with the main SCOM-100 device.

The total of I/Os can be, DI:36 DO:20 AI:18



**Digital I/O expansion unit GE-DIO-42**

Power supply: 12/24 VDC, 0.1 A  
 Digital inputs: 4, 0.2 Hz, Pull  
 Digital outputs: 2, relay 250V/10A (AC1)  
 Indications: LED, I/O & control states  
 Dimensions: 53 x 90 x 58 mm



**Analog input expansion unit GE-AI-4**

Power supply: 12-30 VDC, 50 mA  
 Analog inputs: 4 diff., 0-1V, 0-20/4-20mA, PT100  
 Excitation: 1mA const. current source (4 PT100 sensors)  
 Resolution: 12 bit  
 Indications: LED, Alarm High/Low & control  
 Dimensions: 53 x 90 x 58 mm



SCOM-100  
 PRODUCT RANGE

SIZE A4	FSCM NO	DWG NO 1	REV 8/07
SCALE 1 : 1		SHE ET	1 OF 1

4

3

2

1

D

D

C

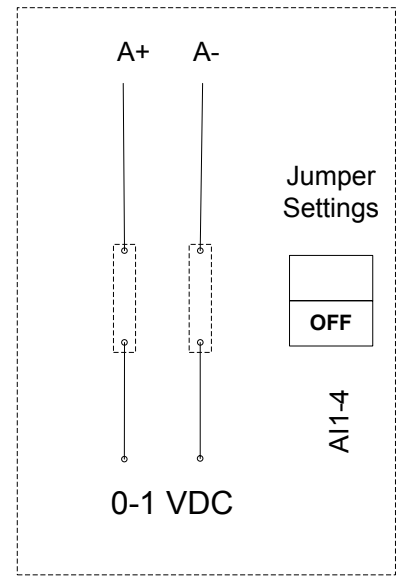
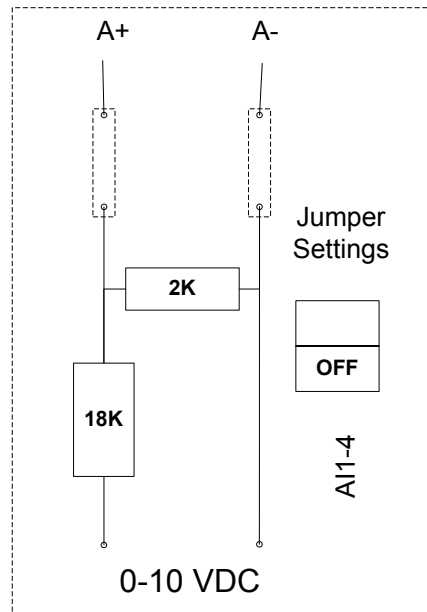
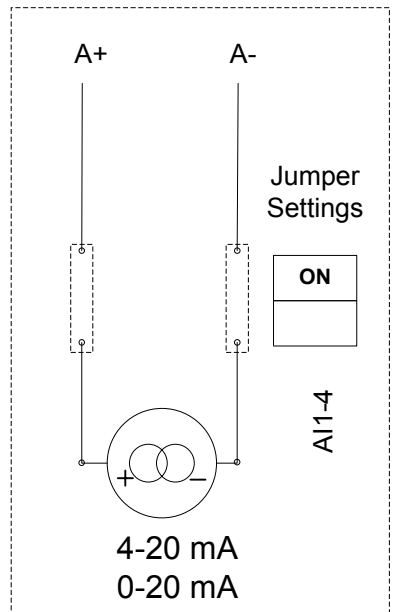
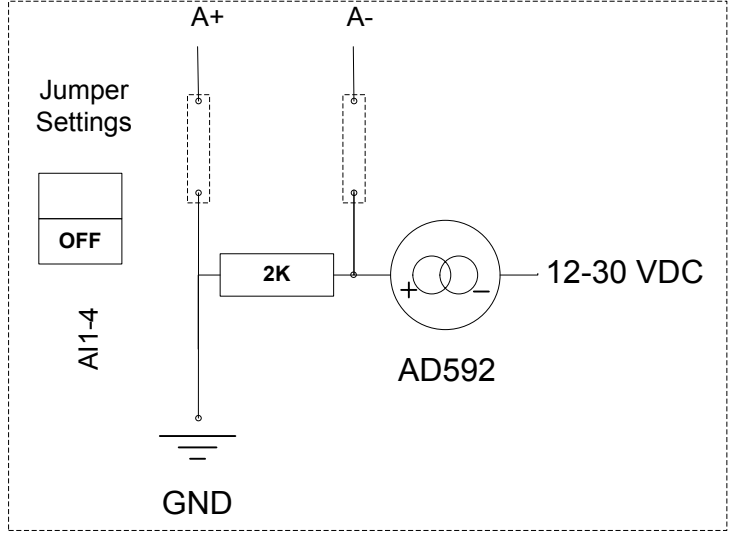
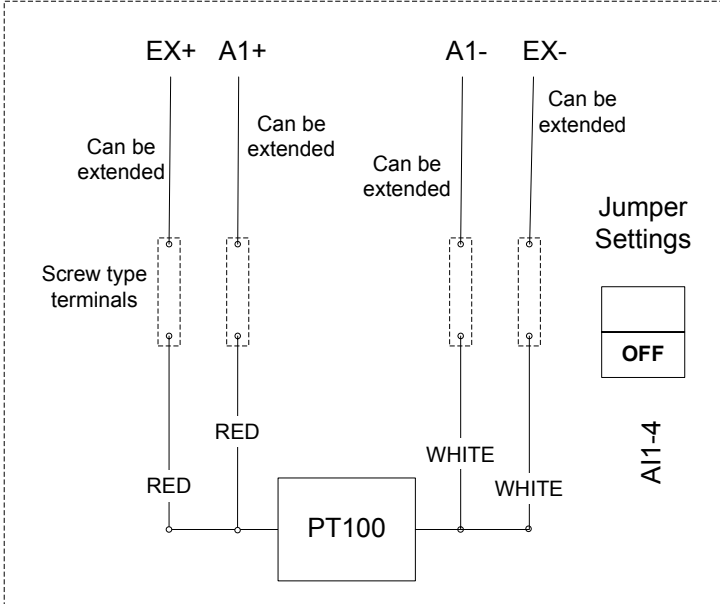
C

B

B

A

A



SCOM-100: GE-AI-4  
HOW TO WIRE SENSORS

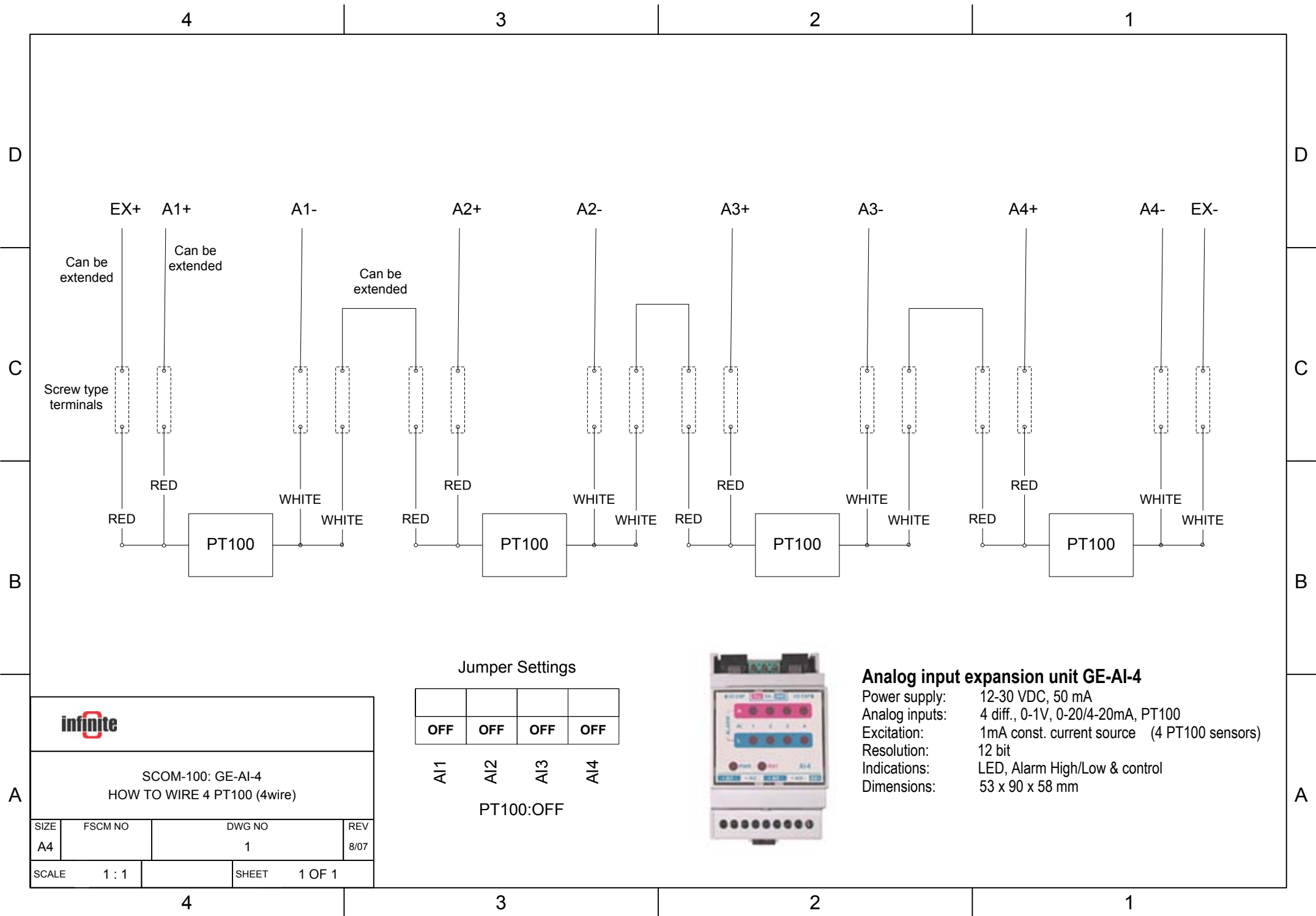
SIZE A4	FSCM NO	DWG NO 1	REV 8/07
SCALE 1 : 1	SHEET 1 OF 1		

4

3

2

1



SCOM-100: GE-AI-4  
HOW TO WIRE 4 PT100 (4wire)

SIZE A4	FSCM NO	DWG NO 1	REV 8/07
------------	---------	-------------	-------------

SCALE 1 : 1	SHEET 1 OF 1
----------------	-----------------

Jumper Settings

OFF	OFF	OFF	OFF
-----	-----	-----	-----

A1 A2 A3 A4

PT100:OFF



**Analog input expansion unit GE-AI-4**

Power supply: 12-30 VDC, 50 mA  
 Analog inputs: 4 diff., 0-1V, 0-20/4-20mA, PT100  
 Excitation: 1mA const. current source (4 PT100 sensors)  
 Resolution: 12 bit  
 Indications: LED, Alarm High/Low & control  
 Dimensions: 53 x 90 x 58 mm